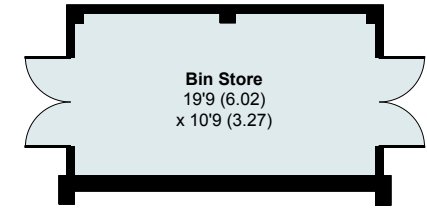
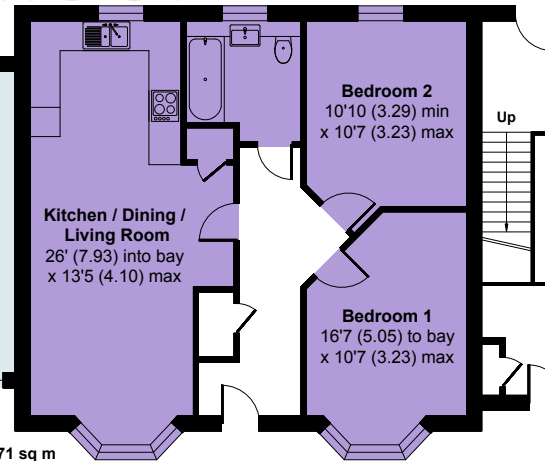
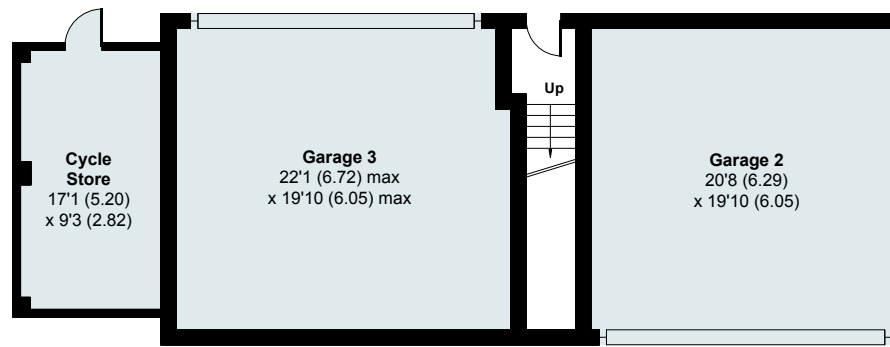
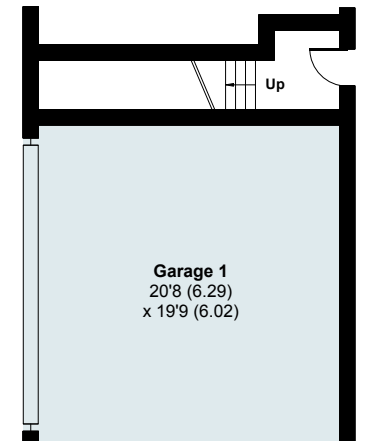


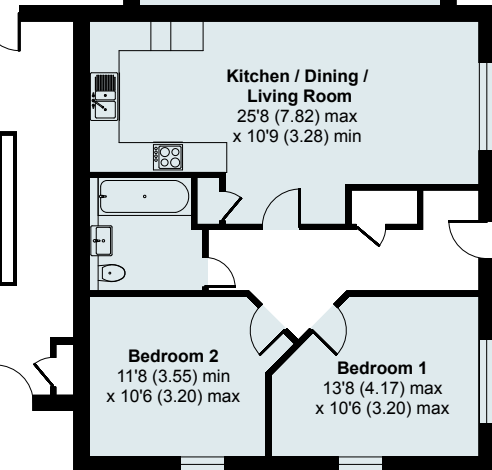
Nightingale Road, Great Barford , MK44 3FH



Parking
19'9 (6.02)
x 18'1 (5.50)



FLAT 68- 764 sq ft / 71 sq m



FLAT 69- 742 sq ft / 69 sq m



Floor plan produced in accordance with RICS Property Measurement Standards incorporating International Property Measurement Standards (IPMS2 Residential). © nitchecom 2020. Produced for Sellnew. REF: 673343