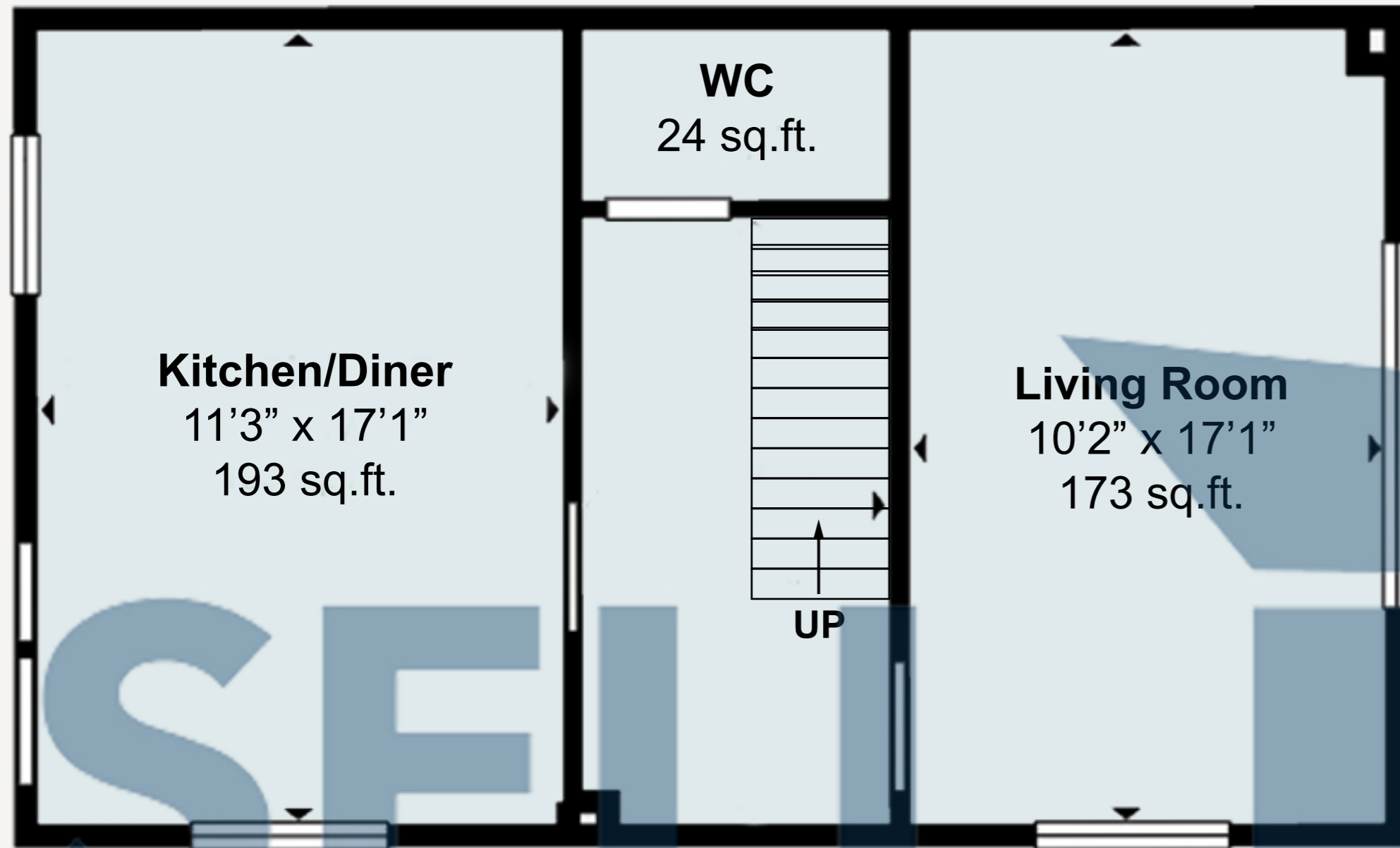
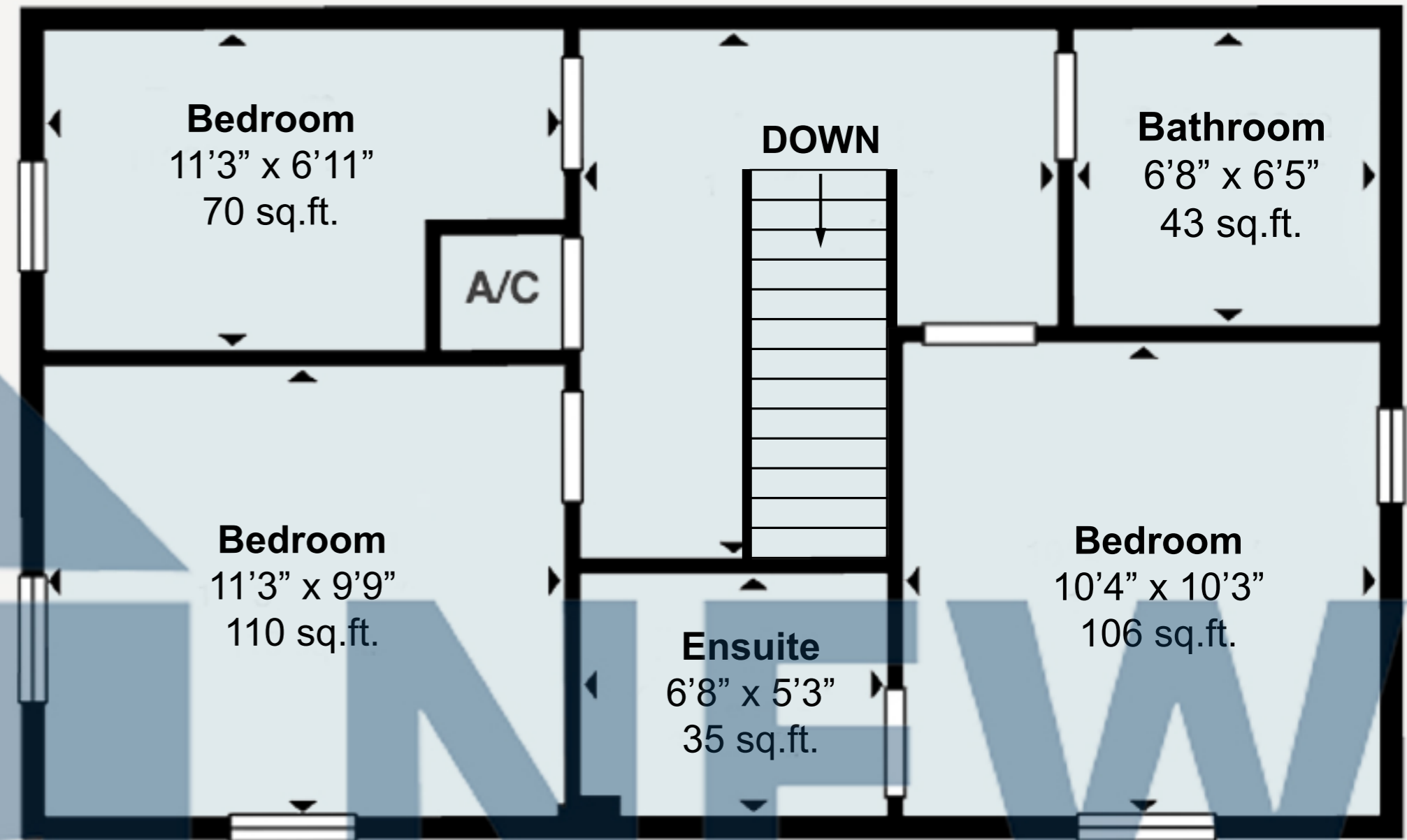


Nightingale Road, Great Barford, MK44 3FG

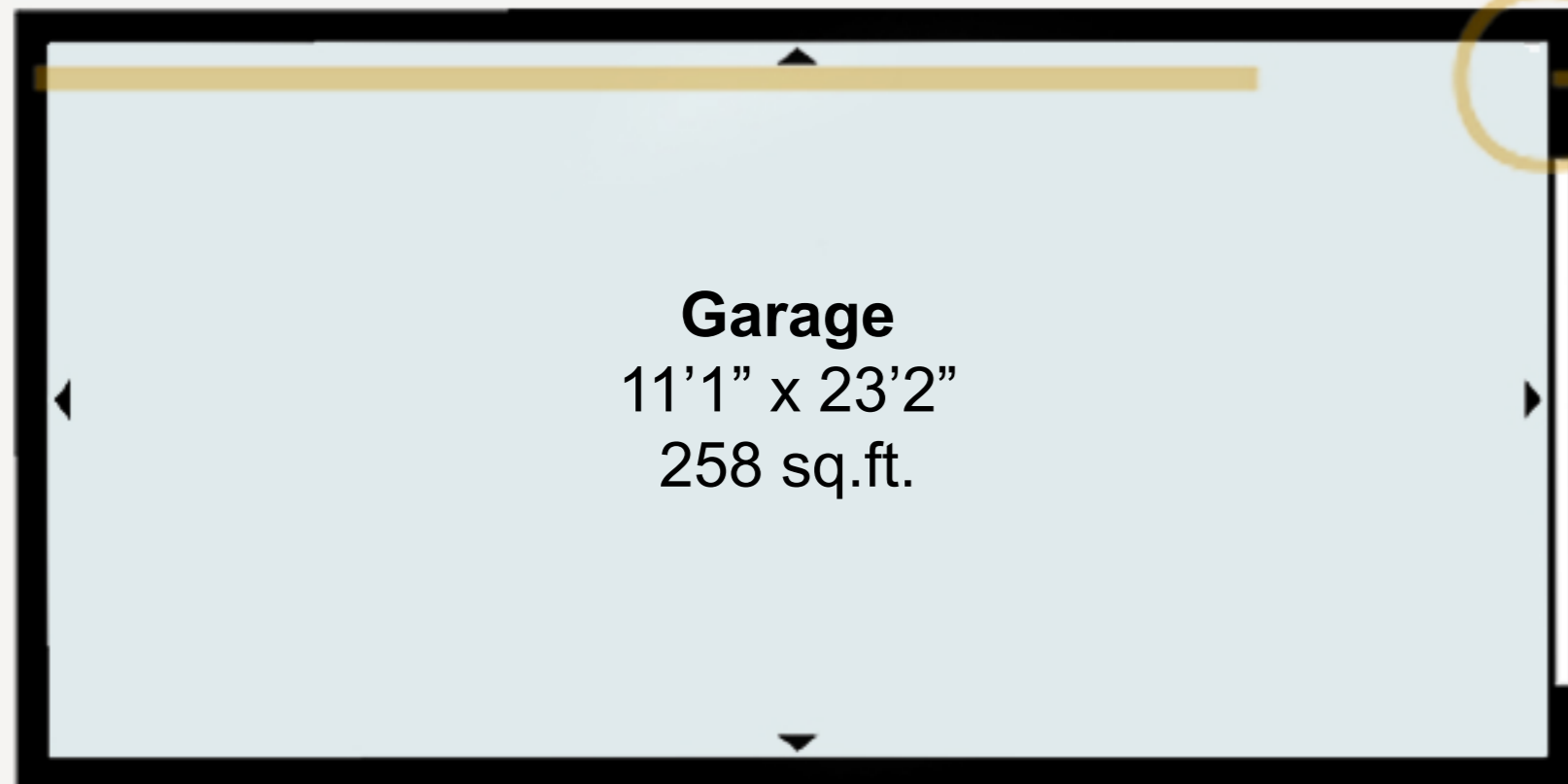
GROUND FLOOR



FIRST FLOOR



GARAGE



Nightingale Road, Great Barford

Ground Floor - 553 sq.ft.

First Floor - 553 sq.ft.

Garage - 258 sq.ft.

Total Area - 1,365 sq.ft.

Disclaimer: Floor plan is for illustrative purposes only and may not be to scale. Measurements and layouts are approximate and should be independently verified. No guarantee is given on the accuracy of the information provided.